



## GPS monitoring technology with less alerts and more accuracy.

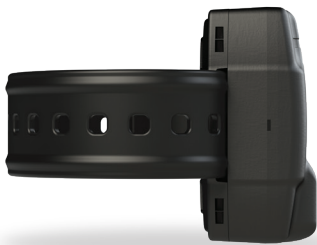
For offenders requiring 24/7 location monitoring, **SCRAM GPS® 9 Plus** is the solution to effectively monitor each and every client. The Wi-Fi tracking ability ensures clients do not go unsupervised—even when GPS points are unavailable. And the extended battery life significantly reduces low and dead battery alerts, allowing officers to focus on managing clients and keeping communities safe.

### SCRAM GPS is ideal for:

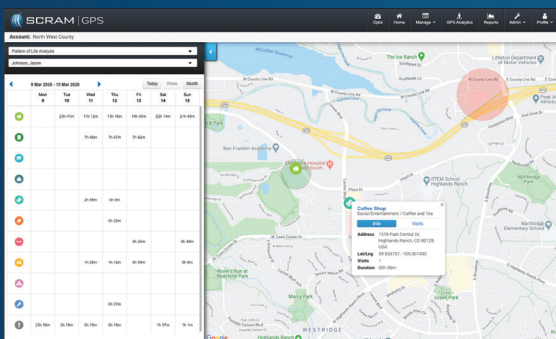
- High-risk offenders
- Pretrial and probation
- Parole and re-entry
- Domestic violence cases
- Sex and violent offenders

### Key Features and Benefits:

- Wi-Fi tracking ensures visibility when GPS points are unavailable
- Built-in state, county, and school zones
- Extended battery life reduces low and dead battery alerts
- Communicates via the FirstNet® wireless network, providing priority service to first responders and public safety agencies, helping ensure continuous communication of location points in high traffic times and critical situations
- Variable range and window leave settings
- On-demand Pursuit Mode automatically provides GPS points every 15 seconds
- On-Body Charger enables clients to charge on the go and break-away design prevents damage when outlet charging



*Optional Tough-Strap for higher-risk clients*



## Pattern of Life Mapping with SCRAM GPS 9 Plus

With Google Maps and Google Info windows built directly into the monitoring software, officers can quickly identify a client's exact location and put client movements into context. Various mapping views allow officers to view Pattern of Life location points by day, week, month, and more. Travel details such as arrival/departure time, address, and time spent at each location provide additional insights into a client's typical travel behavior.

## Integrated Software & Mobile Solutions

### SCRAM TouchPoint® Mobile App

- Improves client engagement while making SCRAM GPS monitoring programs more efficient
- Secure, real-time messaging, automated equipment reminders, and mobile check-ins help clients successfully complete the terms of their supervision



### SCRAM Optix™

- Streamline officer workflows by allowing them to manage their entire SCRAM electronic monitoring caseload with a single login
- Search for clients, view and work alerts, and run advanced reports and interactive program analytics

## Insights from Data & Analytics

### Actionable Data with GPS Analytics and Pattern of Life Mapping

- Quickly analyze up to a month of GPS points to put client movements in context
- See specific locations visited by a client, easily distinguish travel patterns, and identify unknown locations with integrated Google Maps



### Reporting and Program Analytics

- Integrated reports graphically illustrate key program metrics in an easily shared format
- SCRAM Interactive Program analytics provide in-depth, configurable insights on a program's health

## Victim Notification

### SCRAM Ally® Mobile App

- Works in conjunction with SCRAM GPS to notify a victim and the supervising authorities when a GPS client is in proximity to the victim's phone
- Can help provide peace of mind for the victim and gives officers additional insight into the location and actions of high-risk clients

